



**Part No. EF18.14453.003**

**Part No. EG18.14453.003**

**Description:** EGO Hotplate 145mm Dia.

**Application:** Cooktops, cookers.

**Specification:** Solid cast iron hotplate 8mm (high profile) spilling.

**Electrical Rating:** 1000 Watts, 240Volts A.C.

**Supersedes:** 12.14453.693 / 12.14453.183

**Contents:** Hotplate only.

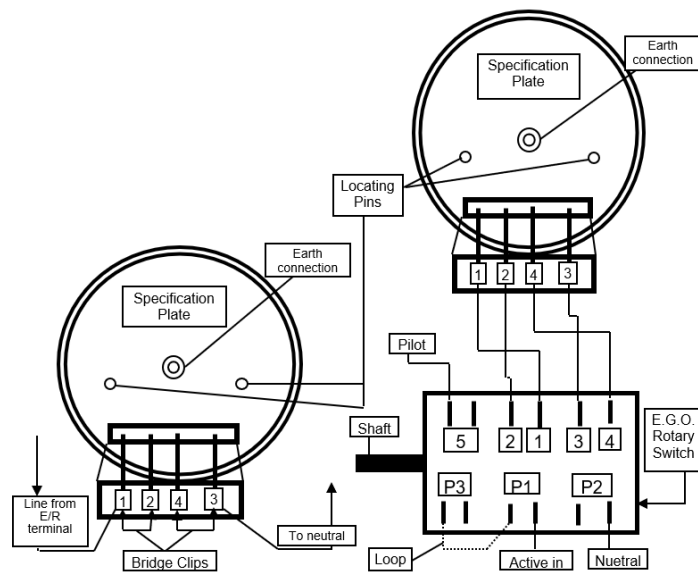
**Available Options:** EF17.12021.000 Accessory kit-mounting bracket leaf spring nuts bridge clip and screws  
EF50.56078.007 or EF 50.56078.008 Energy Regulator.  
EF46.27266.620 Hotplate control 6 heat switch.

**Original user:**

<u>O.E.M.</u>	<u>Part No.</u>
Braemar	73.314
Electrolux	122004246
Rinnai	123.1838
Simpson	122-4-246
Roband	EC0003

**E.G.O. Solid hotplate  
All 4 terminal types**

**E.G.O. Solid hotplate  
to 6 heat switch**



**Fitting instructions:**

**Notes:** Isolate appliance before commencing service.

1. Isolate and remove old hotplate. Identify wiring to make re-connection easier.
2. Replace with a new EGOfix hotplate. The mounting nut should be tightened until the Leaf spring(s) is fully depressed, and then backed off half a turn.
3. Reconnect wiring, ensuring the earth wire is replaced. Note these EGO hotplates are fitted with tunnel connectors.
  - a. Energy regulator control (infinite switch). Fit 2 bridge clips between terminals 1-2 and 3-4 on the hotplate. Connect the active from the energy regulator to 1 and the neutral to 3. If necessary remove the quick connect terminals from the wire end, strip & fit ferrules
  - b. Six heat control (7 position switch). Connect 1-1, 2-2, 3-3 and 4-4.
5. Re-assemble and test.

**IMPORTANT:** Turn the new element to full on for 2-3 minutes to burn and harden the protective coating on the hotplate surface. This will produce a small amount of harmless smoke.

**TO BE INSTALLED ONLY BY A QUALIFIED ELECTRICIAN.**

T: 1800 225 572 | F: 1800 289 723 | E: sales@systemcontrol.com.au | W: systemcontrol.com.au

T: 09 636 1401 | E: sales@systemcontrol.co.nz | W: systemcontrol.co.nz

In support of our policy of continuous product improvement we reserve the right to change materials and specifications without notice. Drawings, where used, are not to scale. All dimensions are in millimetres and sizes given are approximate. Where possible, technical MSDS data sheets are made available on the website. All products should be installed and used in accordance with manufacturer's instructions provided. Warning: products may be the subject of registered designs and patents. Refer to website for terms and conditions on warranty.

