



Part No. EF42.04900.000

Part No. EG42.04900.000

Description: Rotary selector switch.

Operating range: 3 Position + OFF

Application: Multi-function ovens and Deep fryers. Snaps onto thermostat with 2 rear mounted clips.

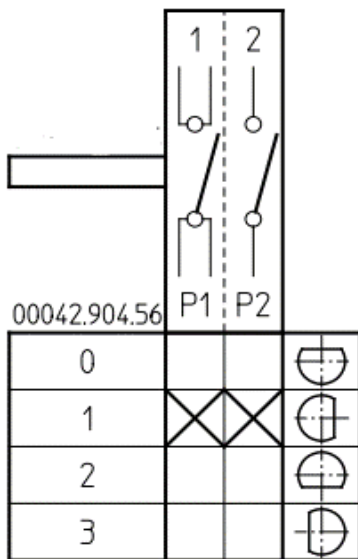
Specification: Multi-pole program switch, dial shaft operated.

Electrical rating: 16 amps, 250 volts, A.C.

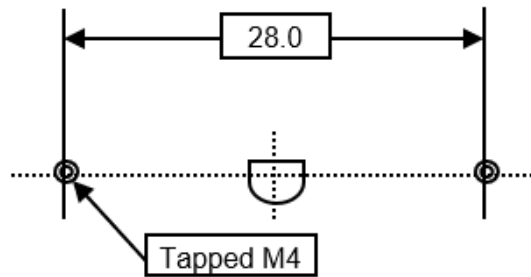
Original User: Moffat P/N 020822 Woodson P/N EC0005

Knob: Use original knob.

Wiring diagram.



Mounting dimensions:



Warnings: To be installed only by a registered electrician. Isolate appliance before commencing service.

T: 1800 225 572 | F: 1800 289 723 | E: sales@systemcontrol.com.au | W: systemcontrol.com.au

T: 09 636 1401 | E: sales@systemcontrol.co.nz | W: systemcontrol.co.nz

In support of our policy of continuous product improvement we reserve the right to change materials and specifications without notice. Drawings, where used, are not to scale. All dimensions are in millimetres and sizes given are approximate. Where possible, technical MSDS data sheets are made available on the website. All products should be installed and used in accordance with manufacturer's instructions provided. Warning: products may be the subject of registered designs and patents. Refer to website for terms and conditions on warranty.

