



Part No. EF50.56074.008

Part No. EG50.56074.008

Description: Energy Regulator

Infinitely variable output from 6% to 70% plus full on position over range 75° to 285° angular.

Application: Hotplate and element control on cookers, grills, urns and heaters.

All applications where output control of a resistive load is required.

Can be used as a replacement for all single pole energy regulators with 75° angular Simmer position and 3/16", 1/4" or 6mm dia dial shafts.

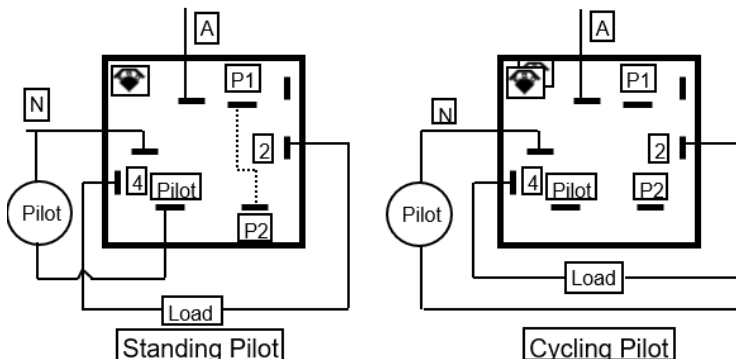
Specification: S.P.S.T. plus pilot switch

Electrical Rating: Cycling contacts-13 amps, 240 volts A.C., non inductive.

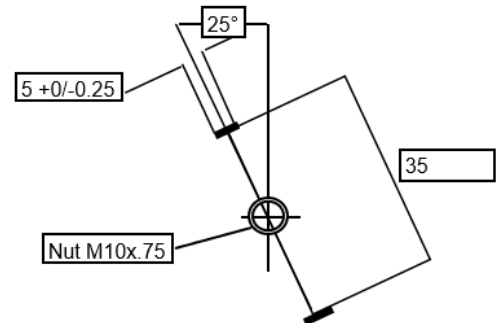
Pilot contacts-0.2 amps, 240 volts A.C.

Standing pilot: Connect jumper wire (supplied) between P1-P2.

Wiring diagram in 'O' position:



Mounting Dimensions:



Instructions: 1.Dial Shaft.

A. 3/16". The dimension across the points of the square shaft is 3/16" and the knob can be fitted without adaptors.

B. 6mm. Fit the open sided plastic adaptor onto the shaft.

C. 1/4". Fit the square plastic adaptor which measures 1/4" across the points.

The knob can be indexed 0°, 90°, 180° and 270°.

Warnings: To be only installed by a Registered Electrician.

Isolate appliance before commencing service.

T: 1800 225 572 | F: 1800 289 723 | E: sales@systemcontrol.com.au | W: systemcontrol.com.au

T: 09 636 1401 | E: sales@systemcontrol.co.nz | W: systemcontrol.co.nz

In support of our policy of continuous product improvement we reserve the right to change materials and specifications without notice. Drawings, where used, are not to scale. All dimensions are in millimetres and sizes given are approximate. Where possible, technical MSDS data sheets are made available on the website. All products should be installed and used in accordance with manufacturer's instructions provided. Warning: products may be the subject of registered designs and patents. Refer to website for terms and conditions on warranty.

