



Part No. EF56.10549.660

Part No. EG56.10549.660

Description: Overtemperature Cut-out, Manual Reset, Fail Safe.

Temperature Range: 240°C cut-out fixed temperature.

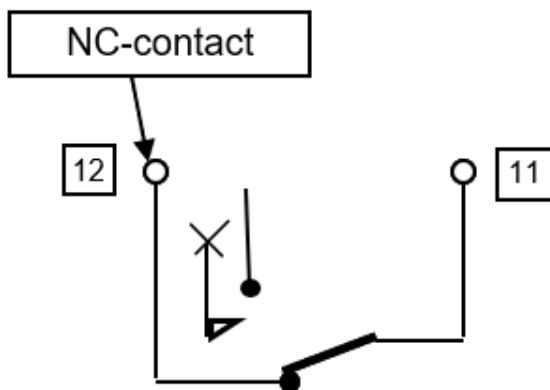
Application: Deep Fryers, fail safe and trip free function.

Specification: S.P.S.T. Cut out on temperature rise. Reset by pushing reset button after temperature fall of at least 20K.

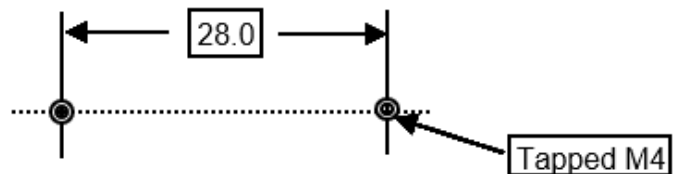
Electrical Rating: N.C. contacts - 16 amps, 240 volts, A.C.

Knob: Push button fitted.

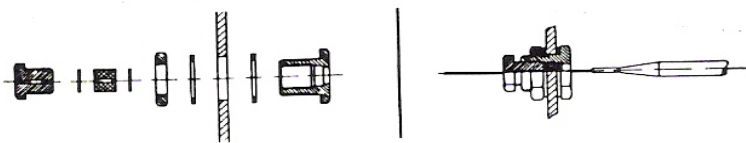
Wiring diagram:



Mounting dimensions:



Gland Nut Assembly:



Alternatively where the vat has a 3/8 BSP socket, Fit gland adaptor EF1234.1

Warnings: To be only installed by a Registered Electrician. Isolate appliance before commencing service.

T: 1800 225 572 | F: 1800 289 723 | E: sales@systemcontrol.com.au | W: systemcontrol.com.au

T: 09 636 1401 | E: sales@systemcontrol.co.nz | W: systemcontrol.co.nz

In support of our policy of continuous product improvement we reserve the right to change materials and specifications without notice. Drawings, where used, are not to scale. All dimensions are in millimetres and sizes given are approximate. Where possible, technical MSDS data sheets are made available on the website. All products should be installed and used in accordance with manufacturer's instructions provided. Warning: products may be the subject of registered designs and patents. Refer to website for terms and conditions on warranty.

