



Part No. EF55.32544.140

Part No. EG55.32544.140

Description: Overtemperature Cut-out, Manual Reset, Fail-safe, Gold contacts.

Temperature Range: 235°C cut-out fixed temperature.

Application: Gas deep fryers.

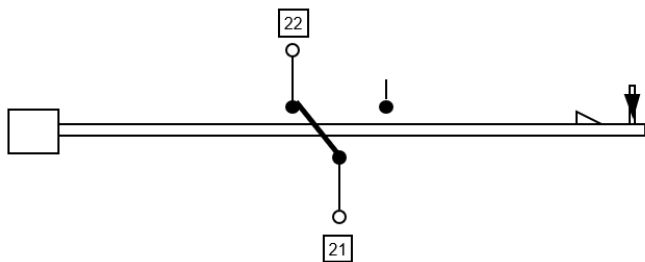
Specification: S.P.S.T. Cut out on temperature rise. Reset by pushing red button after sufficient temperature fall.

Electrical Rating: N.C. contacts - 0.5 amps, 12 volts, A.C.
N.O. contacts - N/A.

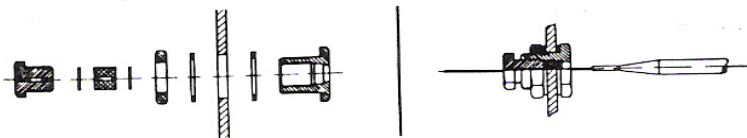
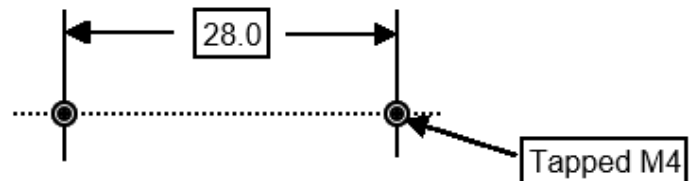
Original user: Commercial manufacturers.

Knob: Push button fitted.

Wiring diagram in 'O' position:



Mounting dimensions:



Alternatively where the vat has a 3/8 BSP socket, Fit gland adaptor EF1234.1

Warnings: To be only installed by a Registered Electrician. Isolate appliance before commencing service.

T: 1800 225 572 | F: 1800 289 723 | E: sales@systemcontrol.com.au | W: systemcontrol.com.au

T: 09 636 1401 | E: sales@systemcontrol.co.nz | W: systemcontrol.co.nz

In support of our policy of continuous product improvement we reserve the right to change materials and specifications without notice. Drawings, where used, are not to scale. All dimensions are in millimetres and sizes given are approximate. Where possible, technical MSDS data sheets are made available on the website. All products should be installed and used in accordance with manufacturer's instructions provided. Warning: products may be the subject of registered designs and patents. Refer to website for terms and conditions on warranty.

